

\$74,900 - 507 10024 Jasper Avenue, Edmonton

MLS® #E4445508

\$74,900

1 Bedroom, 1.00 Bathroom, 450 sqft

Condo / Townhouse on 0.00 Acres

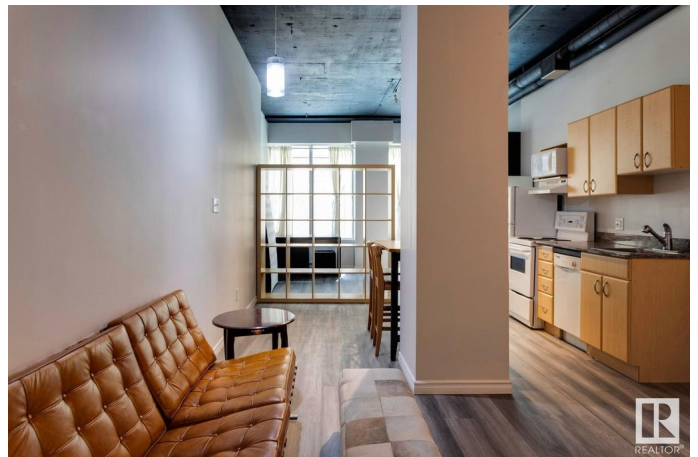
Downtown (Edmonton), Edmonton, AB

Welcome to this beautiful loft, located in the heart of downtown Edmonton. This bright space offers a perfect blend of modern design and industrial charm, with soaring ceilings, and exposed concrete. The bright and spacious living area is flooded with natural light, thanks to it's expansive windows. The modern kitchen features sleek appliances, granite countertops, and the open concept is perfect for entertaining. The loft has in suite laundry and a contemporary 4 piece bathroom. Whether you're a professional looking for a stylish urban retreat, or a savvy investor seeking a prime location, this loft has it all. The building is Air BnB friendly as well as pet friendly (both with board approval). Cambridge Lofts is situated in the heart of downtown Edmonton, putting you steps away from top-tier restaurants, vibrant cafes, trendy boutiques, and art galleries. With direct access to public transit, this building is primed for those who love to explore all downtown has to offer.

Built in 1968

Essential Information

MLS® #	E4445508
Price	\$74,900
Bedrooms	1
Bathrooms	1.00



Full Baths	1
Square Footage	450
Acres	0.00
Year Built	1968
Type	Condo / Townhouse
Sub-Type	Apartment High Rise
Style	Loft
Status	Active

Community Information

Address	507 10024 Jasper Avenue
Area	Edmonton
Subdivision	Downtown (Edmonton)
City	Edmonton
County	ALBERTA
Province	AB
Postal Code	T5J 1R9

Amenities

Amenities	Ceiling 10 ft., Detectors Smoke, Security Door, Security Personnel
Parking	No Parking

Interior

Appliances	Dishwasher-Built-In, Dryer, Furniture Included, Hood Fan, Refrigerator, Stove-Electric, Washer, Window Coverings
Heating	Hot Water, Electric
# of Stories	18
Stories	1
Has Basement	Yes
Basement	None, No Basement

Exterior

Exterior	Concrete, Metal
Exterior Features	Public Transportation, Schools, Shopping Nearby
Roof	Tar & Gravel
Construction	Concrete, Metal
Foundation	Concrete Perimeter

Additional Information

Date Listed	July 3rd, 2025
Days on Market	15
Zoning	Zone 12
Condo Fee	\$426

DATA IS DEEMED RELIABLE BUT IS NOT GUARANTEED ACCURATE BY THE REALTORS® ASSOCIATION OF EDMONTON. COPYRIGHT 2025 BY THE REALTORS® ASSOCIATION OF EDMONTON. ALL RIGHTS RESERVED. Trademarks are owned or controlled by the Canadian Real Estate Association (CREA) and identify real estate professionals who are members of CREA (REALTOR®, REALTORS®) and/or the quality of services they provide (MLS®, Multiple Listing Service®)

Listing information last updated on July 18th, 2025 at 12:17am MDT