

\$1,225,000 - 43 26409 Twp Rd 532 A, Rural Parkland County

MLS® #E4443631

\$1,225,000

6 Bedroom, 4.00 Bathroom, 3,088 sqft

Rural on 1.00 Acres

Spring Meadow Estates, Rural Parkland County, AB

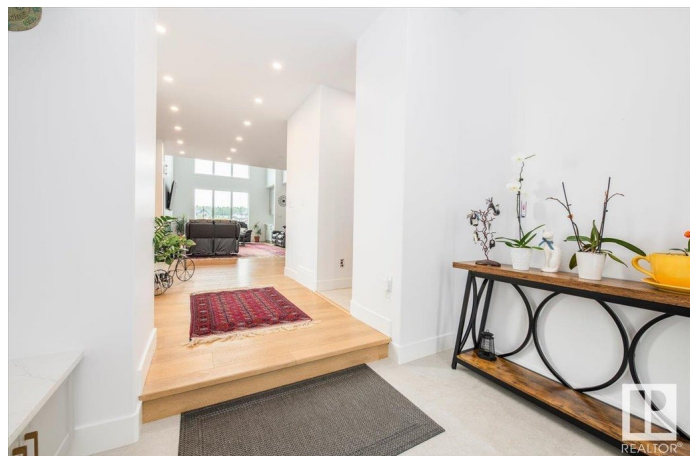
Welcome to Spring Meadows Estates. This beautiful newly build home sitting in a corner lot it's a 2 story with a triple attached garage, 6 bedrooms and 4 full bathrooms. The main floor greets you with an open space with luxurious finishes throughout and extensive natural light. The kitchen it's blend of modern and high end design, with stainless steel appliances, quartz counter tops and walk in pantry, flowing into a fire place centered living room with large windows and high ceiling. The spacious main floor also contains a dining room connecting to a large deck, a bedroom, a 4 pc bath and a mudroom. Upstairs in the flex room you can enjoy your morning coffee or a book . This floor also has 2 bedrooms, an espacious laundry room and a 5pc bathroom. The best is the very private primary suite with a 5pc ensuite and a large walk in closet. The basement offers a rec room with a second wet bar, a 5pc bath and two more bedrooms. This home embodies quiet living, in a luxury setting, just 15 min west of Edmonton.

Built in 2023

Essential Information

MLS® #

E4443631



Price	\$1,225,000
Bedrooms	6
Bathrooms	4.00
Full Baths	4
Square Footage	3,088
Acres	1.00
Year Built	2023
Type	Rural
Sub-Type	Detached Single Family
Style	2 Storey
Status	Active

Community Information

Address	43 26409 Twp Rd 532 A
Area	Rural Parkland County
Subdivision	Spring Meadow Estates
City	Rural Parkland County
County	ALBERTA
Province	AB
Postal Code	T7X 0W7

Amenities

Features	Detectors Smoke, No Animal Home, No Smoking Home, Parking-Extra
Parking Spaces	5

Interior

Interior Features	ensuite bathroom
Heating	Forced Air-1, Natural Gas
Fireplace	Yes
Stories	3
Has Basement	Yes
Basement	Full, Finished

Exterior

Exterior	Wood
Exterior Features	Golf Nearby
Construction	Wood
Foundation	Concrete Perimeter

Additional Information

Date Listed June 20th, 2025

Days on Market 1

Zoning Zone 70

DATA IS DEEMED RELIABLE BUT IS NOT GUARANTEED ACCURATE BY THE REALTORS® ASSOCIATION OF EDMONTON. COPYRIGHT 2025 BY THE REALTORS® ASSOCIATION OF EDMONTON. ALL RIGHTS RESERVED. Trademarks are owned or controlled by the Canadian Real Estate Association (CREA) and identify real estate professionals who are members of CREA (REALTOR®, REALTORS®) and/or the quality of services they provide (MLS®, Multiple Listing Service®)

Listing information last updated on June 21st, 2025 at 5:32pm MDT