

\$499,702 - 146 Galloway Drive, Sherwood Park

MLS® #E4440166

\$499,702

3 Bedroom, 2.50 Bathroom, 1,250 sqft

Single Family on 0.00 Acres

Glen Allan, Sherwood Park, AB

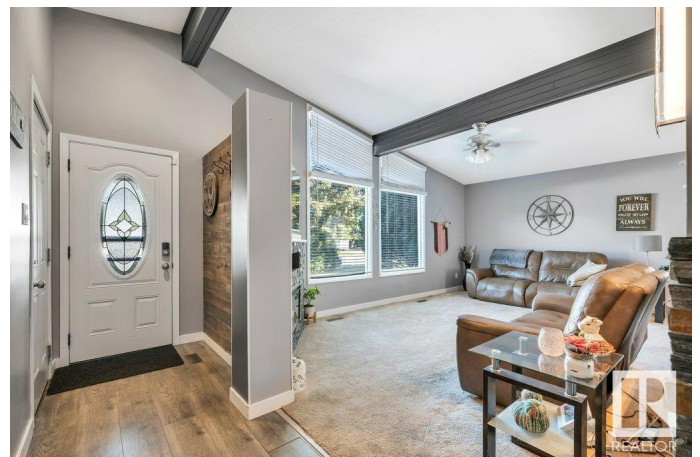
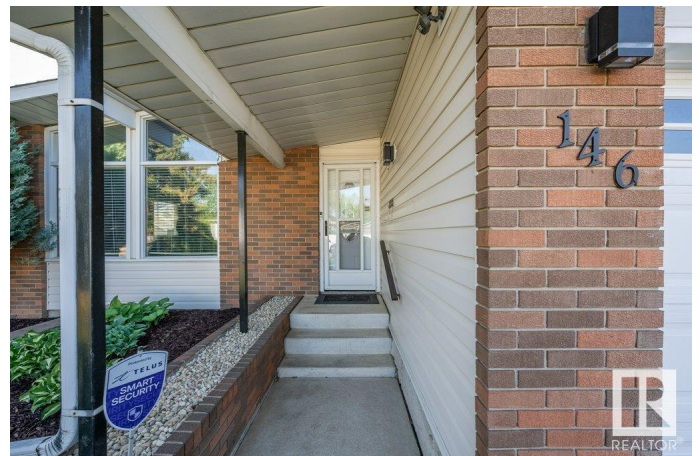
OVER 1200 SQ FT BUNGALOW IN THE HEART OF SHERWOOD PARK/GLEN ALLAN!...BACKS ONTO WALKING/BIKE TRAIL...RENOVATED MAIN FLOOR!...FULLY FINISHED BASEMENT!...This gorgeous home has so much to offer! Kitchen features classic white cabinetry, newer back splash, granite counter tops, stainless steel appliances & eating bar overlooking the living area with vaulted ceiling and electric stone fireplace. Newer laminate flooring too! Three spacious bedrooms on main, w/primary having a 3 pce ensuite! Fully finished basement is also a great entertaining space, and offers a huge rec room with gas fireplace & bar area, as well as 2 pce bath. Enjoy the private backyard with mature trees and a large deck, backing walking trails/bike path. Close to all amenities - parks, schools, Glen Allan Rec Centre, and Sherwood Park Mall. NEWER SHINGLES (approx 6 yrs ago). And don't forget the AC that comes with this home, just in time for summer! This property has everything you need and more! ~!WELCOME HOME!~

Built in 1973

Essential Information

MLS® # E4440166

Price \$499,702



Bedrooms	3
Bathrooms	2.50
Full Baths	2
Half Baths	1
Square Footage	1,250
Acres	0.00
Year Built	1973
Type	Single Family
Sub-Type	Detached Single Family
Style	Bungalow
Status	Active

Community Information

Address	146 Galloway Drive
Area	Sherwood Park
Subdivision	Glen Allan
City	Sherwood Park
County	ALBERTA
Province	AB
Postal Code	T8A 2N2

Amenities

Amenities	Deck
Parking Spaces	4
Parking	Double Garage Attached, Insulated

Interior

Interior Features	ensuite bathroom
Appliances	Air Conditioning-Central, Dishwasher-Built-In, Dryer, Garage Control, Garage Opener, Microwave Hood Fan, Refrigerator, Stove-Electric, Washer
Heating	Forced Air-1, Natural Gas
Fireplace	Yes
Fireplaces	Stone Facing
Stories	2
Has Basement	Yes
Basement	Full, Finished

Exterior

Exterior	Wood, Brick, Vinyl
Exterior Features	Fenced, Flat Site, Landscaped, Park/Reserve, Playground Nearby, Private Setting, Public Transportation, Schools, Shopping Nearby, See Remarks
Roof	Asphalt Shingles
Construction	Wood, Brick, Vinyl
Foundation	Concrete Perimeter

Additional Information

Date Listed	June 3rd, 2025
Days on Market	8
Zoning	Zone 25

DATA IS DEEMED RELIABLE BUT IS NOT GUARANTEED ACCURATE BY THE REALTORS® ASSOCIATION OF EDMONTON. COPYRIGHT 2025 BY THE REALTORS® ASSOCIATION OF EDMONTON. ALL RIGHTS RESERVED.Trademarks are owned or controlled by the Canadian Real Estate Association (CREA) and identify real estate professionals who are members of CREA (REALTOR®, REALTORS®) and/or the quality of services they provide (MLS®, Multiple Listing Service®)

Listing information last updated on June 11th, 2025 at 6:47pm MDT