

\$414,900 - 20 South Creek Wynd, Stony Plain

MLS® #E4434916

\$414,900

3 Bedroom, 2.50 Bathroom, 1,553 sqft

Single Family on 0.00 Acres

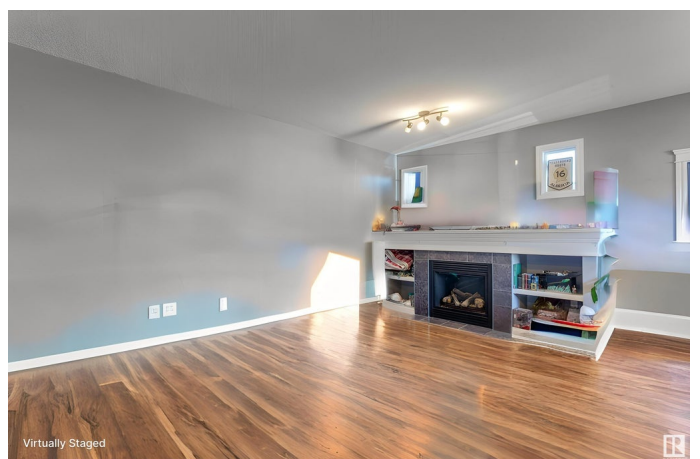
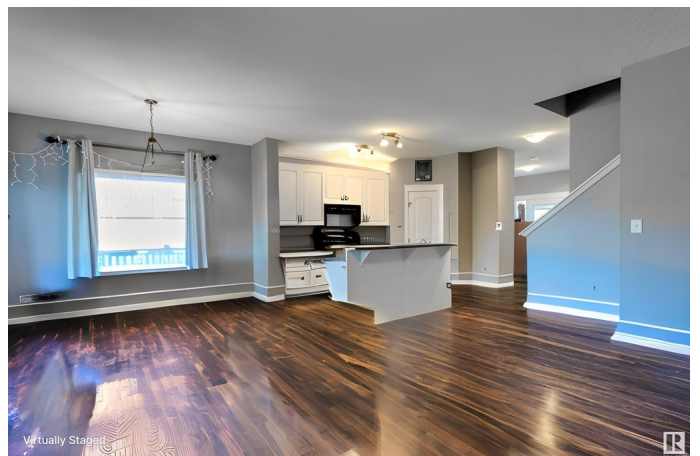
South Creek, Stony Plain, AB

Beautifully maintained 2-storey Pacesetter "Sofia" model in desirable South Creek, located on a spacious corner lot! Bright and welcoming foyer leads into an open-concept main floor with loads of natural light. The kitchen features a large center island with breakfast bar, stainless steel appliances including gas stove, corner pantry, and plenty of workspace. Dining area offers direct access to the backyard and deck—great for entertaining. Upstairs includes 3 spacious bedrooms, upper-floor laundry, and a large primary suite with frosted French doors, walk-in closet, and 4-pc en-suite. Another full 4-pc bath completes the level. Nearly finished basement with rough-in bath—just needs ceilings and baseboards. Central A/C, single attached garage, and great location near parks, playgrounds, and quick access to Hwy 16A and Spruce Grove. Move-in ready with room to grow! (some photos virtually staged)

Built in 2011

Essential Information

MLS® #	E4434916
Price	\$414,900
Bedrooms	3
Bathrooms	2.50
Full Baths	2



Half Baths	1
Square Footage	1,553
Acres	0.00
Year Built	2011
Type	Single Family
Sub-Type	Half Duplex
Style	2 Storey
Status	Active

Community Information

Address	20 South Creek Wynd
Area	Stony Plain
Subdivision	South Creek
City	Stony Plain
County	ALBERTA
Province	AB
Postal Code	T7A 0C8

Amenities

Amenities	Air Conditioner, Deck, Detectors Smoke, No Animal Home, No Smoking Home, Vinyl Windows
Parking Spaces	2
Parking	Single Garage Attached

Interior

Interior Features	ensuite bathroom
Appliances	Air Conditioning-Central, Dishwasher-Built-In, Dryer, Hood Fan, Refrigerator, Storage Shed, Stove-Gas, Washer, Window Coverings
Heating	Forced Air-1, Natural Gas
Fireplace	Yes
Fireplaces	Mantel, Tile Surround
Stories	2
Has Basement	Yes
Basement	Full, Partially Finished

Exterior

Exterior	Wood, Stone, Vinyl
Exterior Features	Corner Lot, Fenced, Flat Site, Golf Nearby, Landscaped, Level Land, Playground Nearby, Public Transportation, Schools, Shopping Nearby

Roof	Asphalt Shingles
Construction	Wood, Stone, Vinyl
Foundation	Concrete Perimeter

Additional Information

Date Listed	May 7th, 2025
Days on Market	63
Zoning	Zone 91

DATA IS DEEMED RELIABLE BUT IS NOT GUARANTEED ACCURATE BY THE REALTORS® ASSOCIATION OF EDMONTON. COPYRIGHT 2025 BY THE REALTORS® ASSOCIATION OF EDMONTON. ALL RIGHTS RESERVED.Trademarks are owned or controlled by the Canadian Real Estate Association (CREA) and identify real estate professionals who are members of CREA (REALTOR®, REALTORS®) and/or the quality of services they provide (MLS®, Multiple Listing Service®)

Listing information last updated on July 9th, 2025 at 9:47am MDT