

\$259,999 - 304 10827 85 Avenue, Edmonton

MLS® #E4431290

\$259,999

2 Bedroom, 2.00 Bathroom, 1,101 sqft

Condo / Townhouse on 0.00 Acres

Garneau, Edmonton, AB

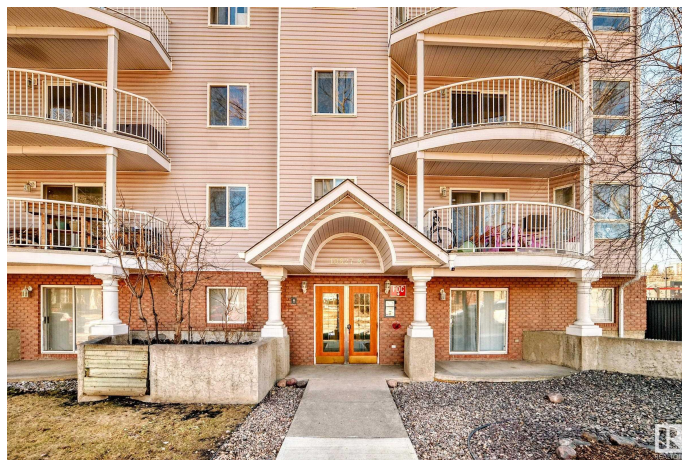
WALKING DISTANCE TO U OF A, U OF A HOSPITAL, WHYTE AVE, RIVER VALLEY, DOWNTOWN - LOCATION 10/10. This 2 bedroom and 2 full bath, 3rd floor north west facing condo in "The Andross" has it all!

Features include: over 1,100 sq.ft. of living space, , open concept kitchen , bright and spacious living room, gas fireplace, tons of storage, large balcony, underground parking, central elevator, and INSUITE laundry. Additionally, large master has a walk-in closet and ensuite bathroom. All utilities are included in the condo fees, except power. Take advantage of one the best areas Edmonton has to offer!

Built in 1994

Essential Information

MLS® #	E4431290
Price	\$259,999
Bedrooms	2
Bathrooms	2.00
Full Baths	2
Square Footage	1,101
Acres	0.00
Year Built	1994
Type	Condo / Townhouse
Sub-Type	Lowrise Apartment



Style	Single Level Apartment
Status	Active

Community Information

Address	304 10827 85 Avenue
Area	Edmonton
Subdivision	Garneau
City	Edmonton
County	ALBERTA
Province	AB
Postal Code	T6E 2L2

Amenities

Amenities	See Remarks
Parking Spaces	1
Parking	Parkade, Underground

Interior

Interior Features	ensuite bathroom
Appliances	Dishwasher-Built-In, Dryer, Refrigerator, Stove-Electric, Washer, Window Coverings
Heating	Hot Water, Natural Gas
Fireplace	Yes
Fireplaces	See Remarks
# of Stories	4
Stories	4
Has Basement	Yes
Basement	None, No Basement

Exterior

Exterior	Wood, Brick, Stucco
Exterior Features	Flat Site, Landscaped, Playground Nearby, Public Transportation, Schools, Shopping Nearby, See Remarks
Roof	Asphalt Shingles
Construction	Wood, Brick, Stucco
Foundation	Concrete Perimeter

Additional Information

Date Listed	April 17th, 2025
-------------	------------------

Days on Market	19
Zoning	Zone 15
Condo Fee	\$716

DATA IS DEEMED RELIABLE BUT IS NOT GUARANTEED ACCURATE BY THE REALTORS® ASSOCIATION OF EDMONTON. COPYRIGHT 2025 BY THE REALTORS® ASSOCIATION OF EDMONTON. ALL RIGHTS RESERVED. Trademarks are owned or controlled by the Canadian Real Estate Association (CREA) and identify real estate professionals who are members of CREA (REALTOR®, REALTORS®) and/or the quality of services they provide (MLS®, Multiple Listing Service®)

Listing information last updated on May 6th, 2025 at 9:47am MDT