

\$137,000 - 5308 48 Avenue, Wetaskiwin

MLS® #E4431247

\$137,000

2 Bedroom, 1.00 Bathroom, 1,073 sqft
Single Family on 0.00 Acres

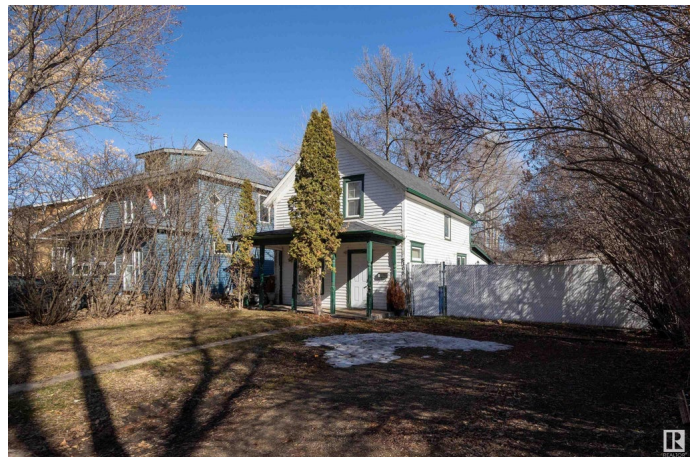
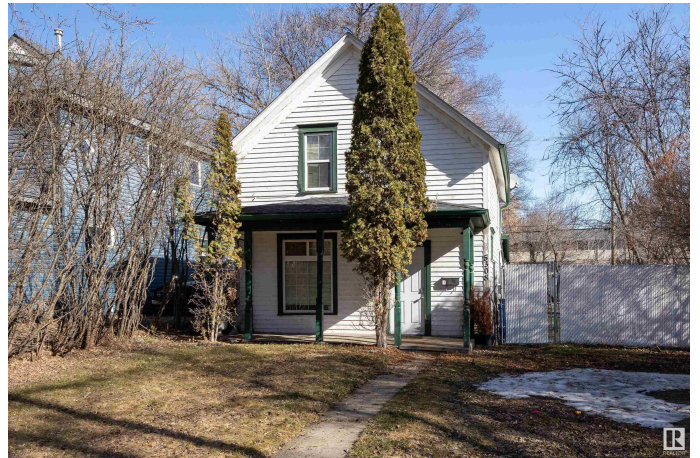
Jubilee, Wetaskiwin, AB

CHARACTER HOME! IMMEDIATE POSSESSION! NEW FURNACE! This 1073 sq ft 2 bed + den, 1 bath home has been refreshed & ideal for those looking for a budget friendly home with a massive 6500 sq ft lot! Newer laminate & tile flooring, vinyl siding, exterior doors, windows, & chainlink fence & more. Open concept living / dining space on the main floor, laundry, & mechanical room with a brand new furnace! Upstairs brings 2 good sized bedrooms, office / den, & 4 pce bathroom. The backyard is massive! Plenty of room to add a triple garage, RV parking, or enjoy your dream garden. Great investment opportunity to buy and hold for future development!

Built in 1905

Essential Information

| | |
|----------------|---------------|
| MLS® # | E4431247 |
| Price | \$137,000 |
| Bedrooms | 2 |
| Bathrooms | 1.00 |
| Full Baths | 1 |
| Square Footage | 1,073 |
| Acres | 0.00 |
| Year Built | 1905 |
| Type | Single Family |



| | |
|----------|------------------------|
| Sub-Type | Detached Single Family |
| Style | 2 Storey |
| Status | Active |

Community Information

| | |
|-------------|----------------|
| Address | 5308 48 Avenue |
| Area | Wetaskiwin |
| Subdivision | Jubilee |
| City | Wetaskiwin |
| County | ALBERTA |
| Province | AB |
| Postal Code | T9A 0N5 |

Amenities

| | |
|-----------|-------------------------------|
| Amenities | Vinyl Windows, See Remarks |
| Parking | Rear Drive Access, RV Parking |

Interior

| | |
|--------------|---|
| Appliances | Dryer, Refrigerator, Stove-Electric, Washer |
| Heating | Forced Air-1, Natural Gas |
| Stories | 2 |
| Has Basement | Yes |
| Basement | None, No Basement |

Exterior

| | |
|-------------------|--|
| Exterior | Wood, Vinyl |
| Exterior Features | Fenced, Playground Nearby, Public Transportation, Schools, Shopping Nearby |
| Roof | Asphalt Shingles |
| Construction | Wood, Vinyl |
| Foundation | Concrete Perimeter |

Additional Information

| | |
|----------------|------------------|
| Date Listed | April 16th, 2025 |
| Days on Market | 8 |
| Zoning | Zone 80 |

DATA IS DEEMED RELIABLE BUT IS NOT GUARANTEED ACCURATE BY THE REALTORS® ASSOCIATION OF EDMONTON. COPYRIGHT 2025 BY THE REALTORS® ASSOCIATION OF EDMONTON. ALL RIGHTS RESERVED. Trademarks are owned or controlled by the Canadian Real Estate Association (CREA) and identify real estate professionals who are members of CREA (REALTOR®, REALTORS®) and/or the quality of services they

provide (MLS® , Multiple Listing Service®)

Listing information last updated on April 24th, 2025 at 8:02am MDT