

Courtesy Of Jasen E Reboh Of RE/MAX Excellence

\$540,000 - 1510 Erker Link Link, Edmonton

MLS® #E4423245

\$540,000

4 Bedroom, 2.50 Bathroom, 1,906 sqft
Single Family on 0.00 Acres

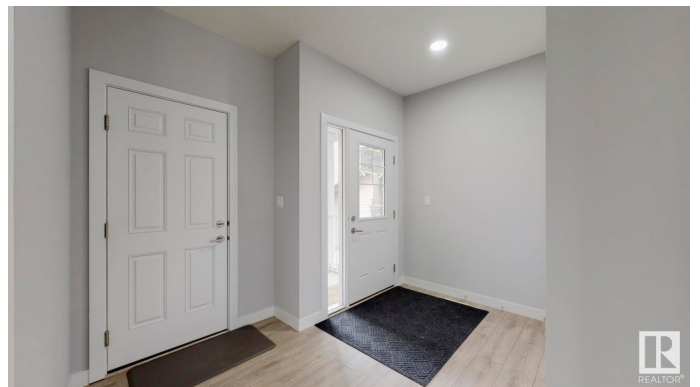
Edgemont (Edmonton), Edmonton, AB

Welcome home to this beautiful 4 BEDROOM 2-storey in Edgemont! Open foyer leads into the 9' CEILINGS open concept kitchen with QUARTZ COUNTERTOPS throughout, sit up ISLAND, STAINLESS APPLIANCES, Cozy up to the living room fireplace, and an added main floor 4TH BEDROOM/office too! Upstairs will find a separate BONUS ROOM, 2 additional bedrooms w/ added Walk-In Closet, 4pc Bathroom, UPSTAIRS LAUNDRY, and the large Primary bedroom with 4pc Ensuite & Huge Walk-In Closet. SEPARATE SIDE ENTRANCE direct access to basement that is awaiting your personal touches or rental suite mortgage helper. Step outside and enjoy the endless SOUTH WEST YARD SUNSHINE on your NEW DECK with NATURAL GAS line to BBQ. MOVE IN READY, perfect for your growing family or invest in a property w/ basement suite potential! Landscaping and Concrete has all since been completed!

Built in 2020

Essential Information

MLS® #	E4423245
Price	\$540,000
Bedrooms	4
Bathrooms	2.50
Full Baths	2



Half Baths	1
Square Footage	1,906
Acres	0.00
Year Built	2020
Type	Single Family
Sub-Type	Detached Single Family
Style	2 Storey
Status	Active

Community Information

Address	1510 Erker Link Link
Area	Edmonton
Subdivision	Edgemont (Edmonton)
City	Edmonton
County	ALBERTA
Province	AB
Postal Code	T6M 0Z7

Amenities

Amenities	Ceiling 9 ft., Deck, Smart/Program. Thermostat, HRV System
Parking Spaces	4
Parking	Double Garage Attached

Interior

Interior Features	ensuite bathroom
Appliances	Dishwasher-Built-In, Dryer, Garage Control, Garage Opener, Hood Fan, Oven-Microwave, Refrigerator, Stove-Electric, Washer, Window Coverings
Heating	Forced Air-1, Natural Gas
Fireplace	Yes
Fireplaces	Mantel
Stories	2
Has Basement	Yes
Basement	Full, Unfinished

Exterior

Exterior	Wood, Stone, Vinyl
Exterior Features	Golf Nearby, Landscaped, Playground Nearby, Public Transportation, Schools, Shopping Nearby

Roof	Asphalt Shingles
Construction	Wood, Stone, Vinyl
Foundation	Concrete Perimeter

School Information

Elementary	Michael A. Kostek School
Middle	S. Bruce Smith Jr. High
High	Jasper Place High School

Additional Information

Date Listed	February 28th, 2025
Days on Market	14
Zoning	Zone 57

DATA IS DEEMED RELIABLE BUT IS NOT GUARANTEED ACCURATE BY THE REALTORS® ASSOCIATION OF EDMONTON. COPYRIGHT 2025 BY THE REALTORS® ASSOCIATION OF EDMONTON. ALL RIGHTS RESERVED. Trademarks are owned or controlled by the Canadian Real Estate Association (CREA) and identify real estate professionals who are members of CREA (REALTOR®, REALTORS®) and/or the quality of services they provide (MLS®, Multiple Listing Service®)

Listing information last updated on March 14th, 2025 at 7:17am MDT