

\$684,900 - 16127 76 Street, Edmonton

MLS® #E4422138

\$684,900

5 Bedroom, 3.00 Bathroom, 1,851 sqft
Single Family on 0.00 Acres

Mayliewan, Edmonton, AB

Gorgeous WALKOUT Bi-level on LAKE, ORIGINAL OWNER, featuring 5 bedrooms & 3 baths. This home is an entertainer's dream with LAKE VIEWS from the huge windows. Upon entering you are greeted with an office/formal dining room and flows into the open kitchen and living room with Hardwood flooring & vaulted ceilings through out the bright and open main floor. The kitchen offers maple cabinets, stainless steel appliances, heated tiled floor and pantry, Stylish living room with fireplace. Up a few steps you'll find the king sized primary, your own private retreat, with large WI closet, jetted tub and shower stall. WALKOUT basement has Infloor Heat, a Family & Rec rooms, a gas fireplace, 4-piece bath, 2 bedrooms, Storage and laundry room. LOVE the landscaped front yard with low maintenance perennials and fountain. Spectacular views from the upper deck or from the lower stamped concrete patio with a wooden shed. • NO GRASS TO MOW • 2023 New shingles, many upgrades and just steps from the school, trails & parks!

Built in 2002

Essential Information

MLS® #	E4422138
Price	\$684,900



Bedrooms	5
Bathrooms	3.00
Full Baths	3
Square Footage	1,851
Acres	0.00
Year Built	2002
Type	Single Family
Sub-Type	Detached Single Family
Style	Bi-Level
Status	Active

Community Information

Address	16127 76 Street
Area	Edmonton
Subdivision	Mayliewan
City	Edmonton
County	ALBERTA
Province	AB
Postal Code	T5Z 3R8

Amenities

Amenities	Closet Organizers, Deck, Detectors Smoke, No Smoking Home, Sauna; Swirlpool; Steam, Vaulted Ceiling, Vinyl Windows, Walkout Basement
Parking Spaces	5
Parking	Double Garage Attached
Is Waterfront	Yes

Interior

Interior Features	ensuite bathroom
Appliances	Dishwasher-Built-In, Dryer, Freezer, Garage Control, Garage Opener, Humidifier-Power(Furnace), Microwave Hood Fan, Oven-Microwave, Refrigerator, Storage Shed, Stove-Electric, Washer, Window Coverings
Heating	Forced Air-1, In Floor Heat System, Natural Gas
Fireplace	Yes
Fireplaces	Three Sided, Tile Surround
Stories	3
Has Basement	Yes
Basement	See Remarks, Finished

Exterior

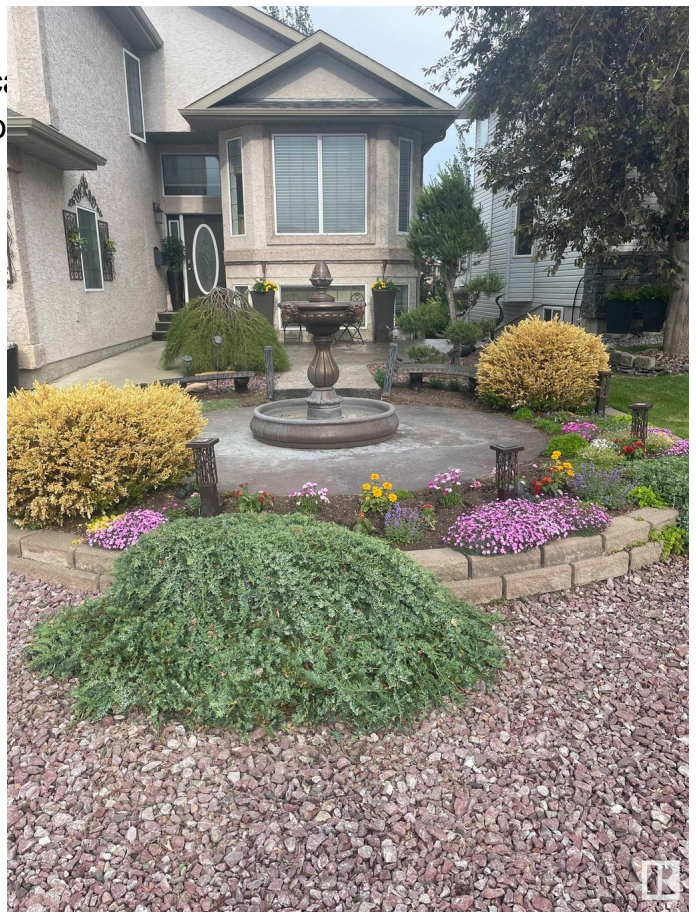
Exterior Wood, Stucco
Exterior Features Backs Onto Lake, Landscaping, Public Transportation, Schools
Roof Asphalt Shingles
Construction Wood, Stucco
Foundation Concrete Perimeter

School Information

Elementary St John Bosco
Middle St Cecilia, JJ Bowlen
High O'leary, ME Lazerte

Additional Information

Date Listed February 20th, 2025
Days on Market 22
Zoning Zone 28



DATA IS DEEMED RELIABLE BUT IS NOT GUARANTEED ACCURATE BY THE REALTORS® ASSOCIATION OF EDMONTON. COPYRIGHT 2025 BY THE REALTORS® ASSOCIATION OF EDMONTON. ALL RIGHTS RESERVED. Trademarks are owned or controlled by the Canadian Real Estate Association (CREA) and identify real estate professionals who are members of CREA (REALTOR®, REALTORS®) and/or the quality of services they provide (MLS®, Multiple Listing Service®)

Listing information last updated on March 14th, 2025 at 7:02am MDT