

Courtesy Of Pankaj Dua Of MaxWell Polaris

\$234,900 - 219 5515 7 Avenue, Edmonton

MLS® #E4420807

\$234,900

2 Bedroom, 2.00 Bathroom, 893 sqft
Condo / Townhouse on 0.00 Acres

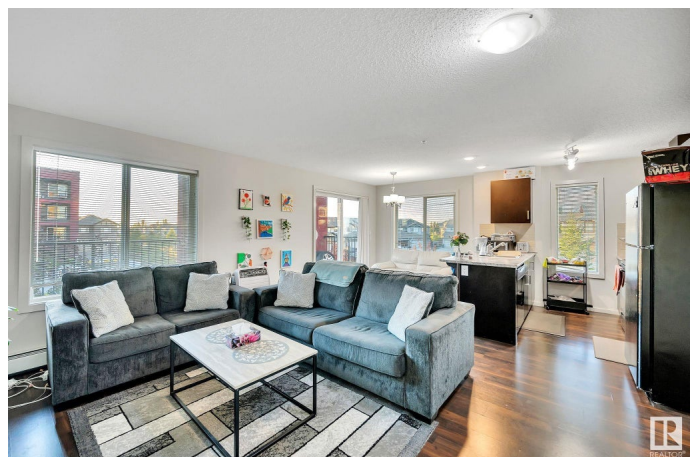
Charlesworth, Edmonton, AB

Welcome to ****The Elements at Willowhaven**** in Charlesworth, SW Edmonton! This original-owner CORNER unit offers over 890 sq ft of meticulously maintained living space, featuring 2 bedrooms and 2 bathrooms. Unit boasts vinyl plank flooring throughout, with cozy carpet in the bedrooms. Modern kitchen is fully equipped ample countertop space, and a stylish **tile backsplash**. Spacious primary bedroom includes a walk-through closet with upgraded organizers, leading to a 4-PC en-suite bathroom. The second bedroom is generously sized, accompanied by a 3-piece main bath and **in-suite laundry**. Step out onto the **HUGE COVERED PATIO** and enjoy the convenience of **2 parking spaces, 1 TITLED heated underground spot WITH STORAGE SPACE, and 1 surface-level space.* Located in a prime area, the building is within walking distance to grocery stores, gas stations, restaurants, a gym, public transit, and a playground. Plus, youâ€™™ have easy access to the Anthony Henday and other nearby amenities!

Built in 2014

Essential Information

MLS® #	E4420807
Price	\$234,900



Bedrooms	2
Bathrooms	2.00
Full Baths	2
Square Footage	893
Acres	0.00
Year Built	2014
Type	Condo / Townhouse
Sub-Type	Lowrise Apartment
Style	Single Level Apartment
Status	Active

Community Information

Address	219 5515 7 Avenue
Area	Edmonton
Subdivision	Charlesworth
City	Edmonton
County	ALBERTA
Province	AB
Postal Code	T6X 2A8

Amenities

Amenities	Intercom, No Smoking Home, Parking-Plug-Ins, Parking-Visitor, Patio, See Remarks, Natural Gas BBQ Hookup
Parking Spaces	2
Parking	Heated, Stall, Underground

Interior

Interior Features	ensuite bathroom
Appliances	Dishwasher-Built-In, Microwave Hood Fan, Refrigerator, Stacked Washer/Dryer, Stove-Electric
Heating	Baseboard, Electric
# of Stories	4
Stories	4
Has Basement	Yes
Basement	None, No Basement

Exterior

Exterior	Wood, Vinyl
Exterior Features	Airport Nearby, Playground Nearby, Public Transportation, Shopping

	Nearby, See Remarks
Roof	Asphalt Shingles
Construction	Wood, Vinyl
Foundation	Concrete Perimeter

Additional Information

Date Listed	February 7th, 2025
Days on Market	35
Zoning	Zone 53
Condo Fee	\$480

DATA IS DEEMED RELIABLE BUT IS NOT GUARANTEED ACCURATE BY THE REALTORS® ASSOCIATION OF EDMONTON. COPYRIGHT 2025 BY THE REALTORS® ASSOCIATION OF EDMONTON. ALL RIGHTS RESERVED. Trademarks are owned or controlled by the Canadian Real Estate Association (CREA) and identify real estate professionals who are members of CREA (REALTOR®, REALTORS®) and/or the quality of services they provide (MLS®, Multiple Listing Service®)

Listing information last updated on March 14th, 2025 at 2:17am MDT