

\$35,000 - 5222 55 Avenue, Tofield

MLS® #E4419160

\$35,000

0 Bedroom, 0.00 Bathroom,
Single Family on 0.00 Acres

Tofield, Tofield, AB

52.5' x 115' serviced lot in Ketchamoot Plains subdivision in Tofield. Unobstructed view of the countryside! Residential Building Tax Incentive for this lot. Commuting distances from Tofield: Sherwood Park (50 km), Edmonton (67 km), YEG Airport (75 km), Fort Saskatchewan (74 km), and Camrose (50 km). A must see!!!

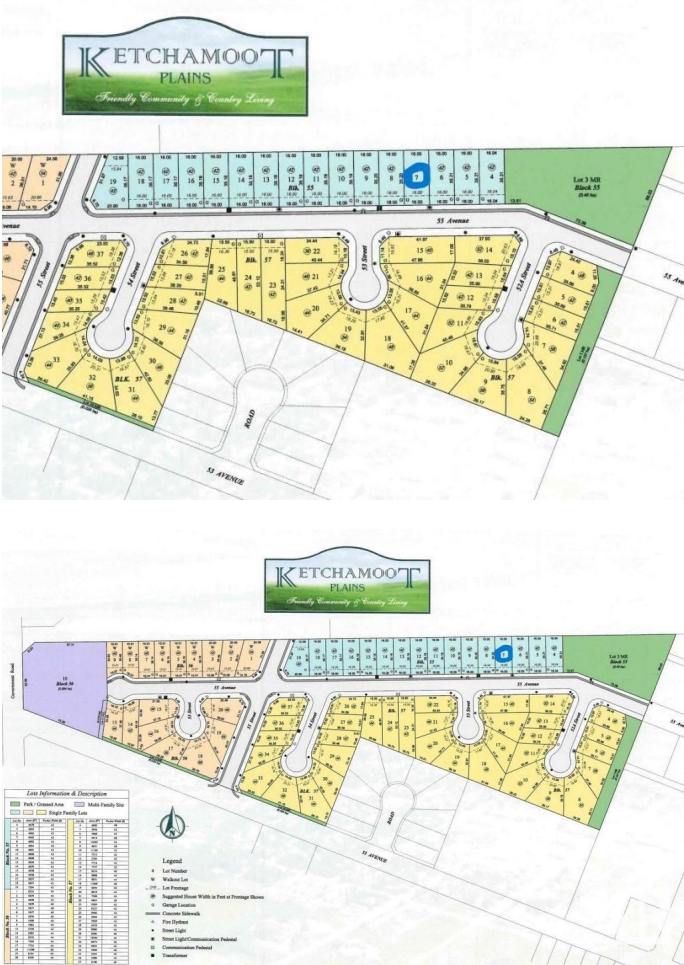
Essential Information

MLS® #	E4419160
Price	\$35,000
Bathrooms	0.00
Acres	0.00
Type	Single Family
Sub-Type	Vacant Lot/Land
Status	Active

Community Information

Address	5222 55 Avenue
Area	Tofield
Subdivision	Tofield
City	Tofield
County	ALBERTA
Province	AB
Postal Code	T0B 4J0

Exterior



Exterior Features Flat Site, No Back Lane

School Information

Elementary	C.W.Sears Tofield (K-4)
Middle	Tofield (5-9)
High	Tofield

Additional Information

Date Listed	January 24th, 2025
Days on Market	104
Zoning	Zone 80

DATA IS DEEMED RELIABLE BUT IS NOT GUARANTEED ACCURATE BY THE REALTORS® ASSOCIATION OF EDMONTON. COPYRIGHT 2025 BY THE REALTORS® ASSOCIATION OF EDMONTON. ALL RIGHTS RESERVED.Trademarks are owned or controlled by the Canadian Real Estate Association (CREA) and identify real estate professionals who are members of CREA (REALTOR®, REALTORS®) and/or the quality of services they provide (MLS®, Multiple Listing Service®)

Listing information last updated on May 8th, 2025 at 5:17pm MDT