

\$4,380,000 - 11433 154 Street, Edmonton

MLS® #E4417100

\$4,380,000

0 Bedroom, 0.00 Bathroom,
Industrial on 0.00 Acres

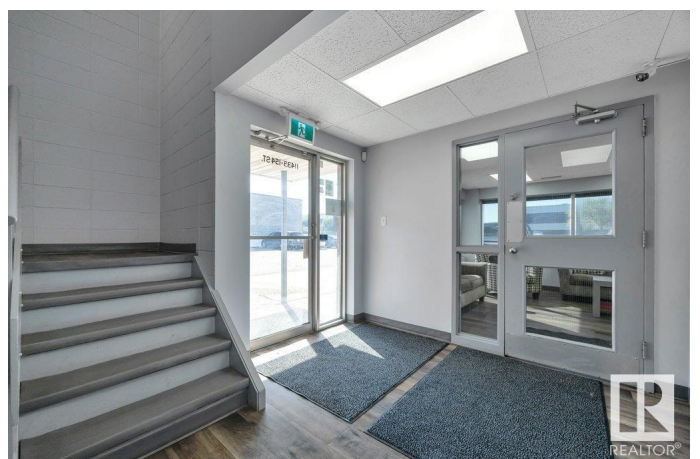
Garside Industrial, Edmonton, AB

Exceptional commercial property with a sprawling land size of 3.56 acres. Boasting a vast shop and office area spanning over 12,000.00 square feet. This property is equipped with a truck wash bay , four drive through truck repair bays and a bay for storage and parts. The shop area has 11, 14' overhead doors and epoxy coated floor. Makeup air system and has separate lines for compressed air, water and oil. The office area offers comfort with air conditioning, luxury vinyl plank flooring, ample windows, and soundproof separation from the shop. All the light fixtures in office, shop and yard are LED. An ideal space and location for a heavy duty truck repair business with additional revenue from a large truck wash bay, plus increase your profits even more by leasing semi truck owners large parking stalls!

Built in 1983

Essential Information

| | |
|------------|-------------|
| MLS® # | E4417100 |
| Price | \$4,380,000 |
| Bathrooms | 0.00 |
| Acres | 0.00 |
| Year Built | 1983 |
| Type | Industrial |
| Status | Active |



Community Information

Address 11433 154 Street
Area Edmonton
Subdivision Garside Industrial
City Edmonton
County ALBERTA
Province AB
Postal Code T5M 3N7

Exterior

Exterior Concrete, Mixed, Steel Frame
Construction Concrete, Mixed, Steel Frame

Additional Information

Date Listed January 6th, 2025
Days on Market 108
Zoning Zone 40

DATA IS DEEMED RELIABLE BUT IS NOT GUARANTEED ACCURATE BY THE REALTORS® ASSOCIATION OF EDMONTON. COPYRIGHT 2025 BY THE REALTORS® ASSOCIATION OF EDMONTON. ALL RIGHTS RESERVED. Trademarks are owned or controlled by the Canadian Real Estate Association (CREA) and identify real estate professionals who are members of CREA (REALTOR®, REALTORS®) and/or the quality of services they provide (MLS®, Multiple Listing Service®)

Listing information last updated on April 24th, 2025 at 2:47pm MDT