

\$129,900 - 401 13910 Stony Plain Road, Edmonton

MLS® #E4415583

\$129,900

1 Bedroom, 1.00 Bathroom, 670 sqft
Condo / Townhouse on 0.00 Acres

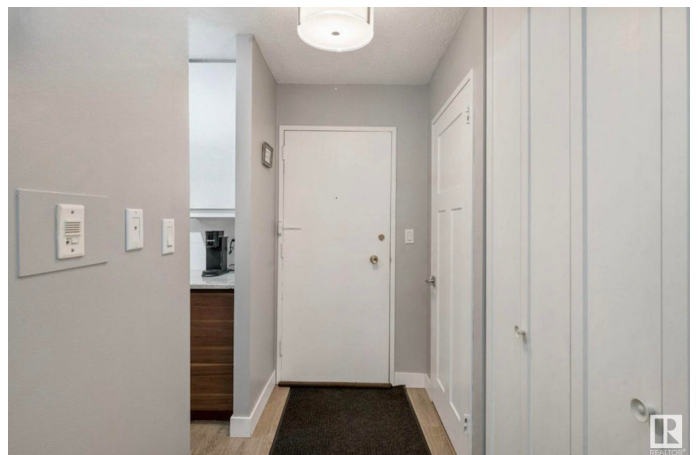
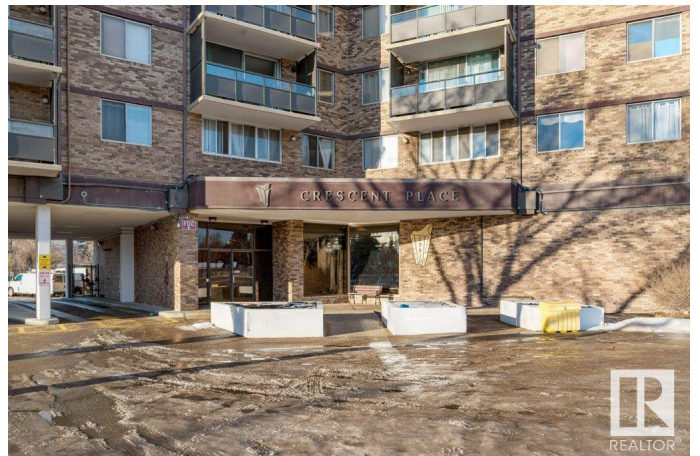
Glenora, Edmonton, AB

CONCRETE construction meets modern convenience in GLENORA! Welcome to Crescent Place! Start living the hassle-free urban lifestyle you crave! Located on the 4th floor, this fully renovated, 1bed 1 bath unit, welcomes you to a open concept living and dining area featuring neutral vinyl plank flooring throughout, with ample space for entertaining. Renovated galley kitchen (2019) offers S/S appliances, sleek granite counter tops, high gloss 2 toned cabinetry, dry bar with mini fridge and tons of floor to ceiling storage! Spacious primary w/ huge closet, updated 4pc, in-suite storage and a massive balcony to enjoy the outdoors. ALL UTILITIES INCLUDED!! PLUS..you will have access to all of the fantastic building amenities .. indoor pool, sauna, and well equipped exercise room. AMAZING LOCATION..youâ€™re just minutes from Edmontonâ€™s stunning River Valley, the High Street shops & W.E.M... easy access to public transit and schools! Located directly on future Valley Line West!

Built in 1969

Essential Information

MLS® #	E4415583
Price	\$129,900
Bedrooms	1



Bathrooms	1.00
Full Baths	1
Square Footage	670
Acres	0.00
Year Built	1969
Type	Condo / Townhouse
Sub-Type	Apartment High Rise
Style	Single Level Apartment
Status	Active

Community Information

Address	401 13910 Stony Plain Road
Area	Edmonton
Subdivision	Glenora
City	Edmonton
County	ALBERTA
Province	AB
Postal Code	T5N 3R2

Amenities

Amenities	Exercise Room, Intercom, No Smoking Home, Pool-Indoor, Recreation Room/Centre, Sauna; Swirlpool; Steam, Security Door, Social Rooms, Storage-In-Suite
Parking	See Remarks
Has Pool	Yes

Interior

Appliances	Dishwasher-Built-In, Microwave Hood Fan, Refrigerator, Stove-Electric, Window Coverings, See Remarks
Heating	Hot Water, Natural Gas
# of Stories	18
Stories	1
Has Basement	Yes
Basement	None, No Basement

Exterior

Exterior	Concrete, Brick
Exterior Features	Public Transportation, Schools, Shopping Nearby, See Remarks
Roof	Tar & Gravel

Construction	Concrete, Brick
Foundation	Concrete Perimeter

Additional Information

Date Listed	December 8th, 2024
Days on Market	136
Zoning	Zone 11
Condo Fee	\$651

DATA IS DEEMED RELIABLE BUT IS NOT GUARANTEED ACCURATE BY THE REALTORS® ASSOCIATION OF EDMONTON. COPYRIGHT 2025 BY THE REALTORS® ASSOCIATION OF EDMONTON. ALL RIGHTS RESERVED. Trademarks are owned or controlled by the Canadian Real Estate Association (CREA) and identify real estate professionals who are members of CREA (REALTOR®, REALTORS®) and/or the quality of services they provide (MLS®, Multiple Listing Service®)

Listing information last updated on April 23rd, 2025 at 7:47pm MDT