

\$7,900,000 - 49279 Rr250, Rural Leduc County

MLS® #E4415240

\$7,900,000

0 Bedroom, 0.00 Bathroom,
Rural on 130.10 Acres

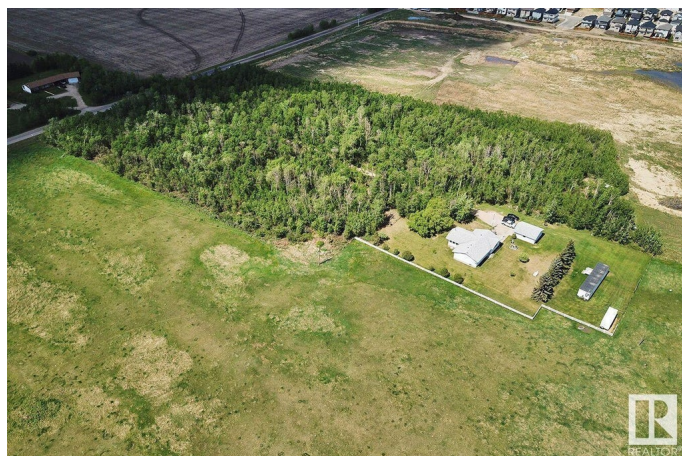
None, Rural Leduc County, AB

Amazing Opportunity to have 130.10 Acres of Prime Development Land located just South of the Robinson Development of Leduc on RR250 which is paved all the way to Hwy 2A. This Land is ready for your ideas. There is a Future Major Road Way Slated to come right on the border of the north part of the property! Within the same quarter section you already have infrastructure which includes a church and school. Leduc is growing at a rapid pace, with all the future and on going development in the area including the Discovery Business Park and the Premium Outlet Collection Centre at the Edmonton International Airport, The Ford Plant and the new Spine Road. Adjoining 73.86 Acres is also available please see MLS number E4415241. Do not wait and miss this opportunity.

Essential Information

MLS® #	E4415240
Price	\$7,900,000
Bathrooms	0.00
Acres	130.10
Type	Rural
Sub-Type	Vacant Lot/Land
Status	Active

Community Information



Address	49279 Rr250
Area	Rural Leduc County
Subdivision	None
City	Rural Leduc County
County	ALBERTA
Province	AB
Postal Code	T4X 2T6

Exterior

Exterior Features See Remarks

Additional Information

Date Listed	December 3rd, 2024
Days on Market	158
Zoning	Zone 80

DATA IS DEEMED RELIABLE BUT IS NOT GUARANTEED ACCURATE BY THE REALTORS® ASSOCIATION OF EDMONTON. COPYRIGHT 2025 BY THE REALTORS® ASSOCIATION OF EDMONTON. ALL RIGHTS RESERVED.Trademarks are owned or controlled by the Canadian Real Estate Association (CREA) and identify real estate professionals who are members of CREA (REALTOR®, REALTORS®) and/or the quality of services they provide (MLS®, Multiple Listing Service®)

Listing information last updated on May 10th, 2025 at 3:17am MDT