

\$106,000 - 4615 4 Avenue, Edson

MLS® #E4409434

\$106,000

2 Bedroom, 1.00 Bathroom, 706 sqft

Single Family on 0.00 Acres

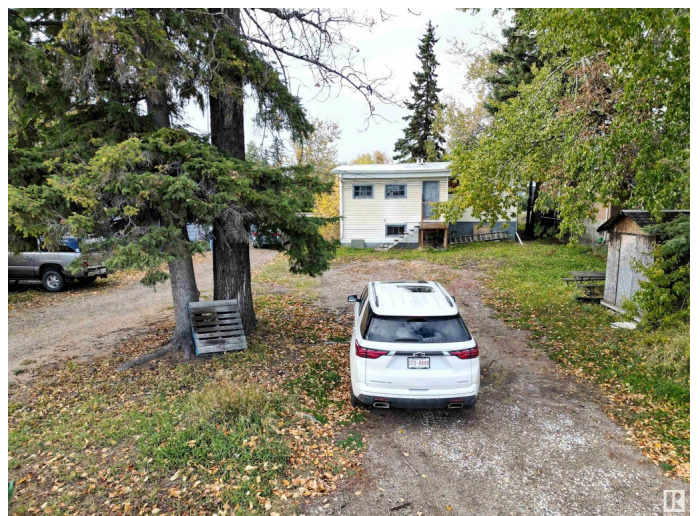
Edson, Edson, AB

Amazing Location Along 4th Avenue (HWY 16)
Perfect HWY Exposure For Your Business!
This Two Bedroom, One Bathroom Home This Home is Located on a Large 50' x 140' Lot With Back Alley Access and HWY 16 West Frontage. Large Entry Porch for All Those Coats Boots & Extras. Huge Yard With Lots of Parking and Mature Trees. A Total of Three Adjoining Lots Available If you are Looking for a Larger Property for Your Business. Excellent Location With All Amenities Within Walking Distance. C-3 Highway Commercial Zoning Allows For a Variety of Uses for this Versatile Property.

Built in 1955

Essential Information

MLS® #	E4409434
Price	\$106,000
Bedrooms	2
Bathrooms	1.00
Full Baths	1
Square Footage	706
Acres	0.00
Year Built	1955
Type	Single Family
Sub-Type	Detached Single Family
Style	Bungalow



Status Active

Community Information

Address 4615 4 Avenue
Area Edson
Subdivision Edson
City Edson
County ALBERTA
Province AB
Postal Code T7E 1C2

Amenities

Amenities Crawl Space
Parking No Garage, Rear Drive Access, RV Parking, See Remarks

Interior

Appliances Stove-Electric
Heating Forced Air-1, Natural Gas
Stories 1
Has Basement Yes
Basement Partial, See Remarks

Exterior

Exterior Wood, Vinyl
Exterior Features Back Lane, Landscaped, Schools, Shopping Nearby, See Remarks
Lot Description 50X140
Roof Metal
Construction Wood, Vinyl
Foundation Block

Additional Information

Date Listed October 5th, 2024
Days on Market 261
Zoning Zone 70

DATA IS DEEMED RELIABLE BUT IS NOT GUARANTEED ACCURATE BY THE REALTORS® ASSOCIATION OF EDMONTON. COPYRIGHT 2025 BY THE REALTORS® ASSOCIATION OF EDMONTON. ALL RIGHTS RESERVED.Trademarks are owned or controlled by the Canadian Real Estate Association (CREA) and identify real estate professionals who are members of CREA (REALTOR®, REALTORS®) and/or the quality of services they provide (MLS®, Multiple Listing Service®)
Listing information last updated on June 23rd, 2025 at 12:32pm MDT