

\$499,000 - N/A, Rural Strathcona County

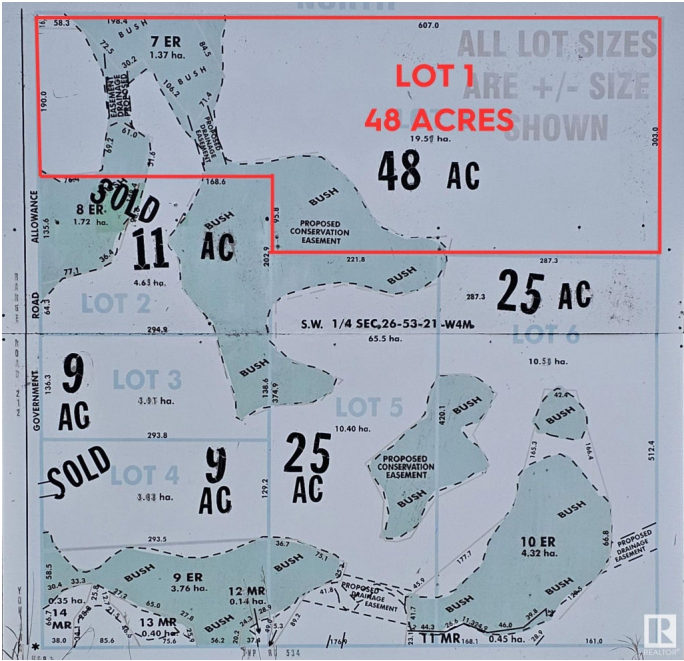
MLS® #E4381247

\$499,000

0 Bedroom, 0.00 Bathroom,
Rural on 48.00 Acres

None, Rural Strathcona County, AB

Welcome Home! Make your dream a reality on these quiet lots and build your dream home. ONE LOT LEFT!!!! 48 Acre Lot Located on: Paved roads in Strathcona County on the corner of TWP RD 534 & RGE RD 212 15 minutes to Sherwood Park and Fort Saskatchewan Easy driving distance to the Heartland projects Additional perks include: Lots of space for a shop Extra wide driveways WIFI Power to ALL lots Gas to the property line Bring your horses, enjoy nature and the peace and quiet!



Essential Information

MLS® #	E4381247
Price	\$499,000
Bathrooms	0.00
Acres	48.00
Type	Rural
Sub-Type	Vacant Lot/Land
Status	Active

Community Information

Address	N/A
Area	Rural Strathcona County
Subdivision	None
City	Rural Strathcona County
County	ALBERTA

Province	AB
Postal Code	T0J 1S0

Exterior

Exterior Features Environmental Reserve, See Remarks

Additional Information

Date Listed	April 10th, 2024
Days on Market	383
Zoning	Zone 80

DATA IS DEEMED RELIABLE BUT IS NOT GUARANTEED ACCURATE BY THE REALTORS® ASSOCIATION OF EDMONTON. COPYRIGHT 2025 BY THE REALTORS® ASSOCIATION OF EDMONTON. ALL RIGHTS RESERVED.Trademarks are owned or controlled by the Canadian Real Estate Association (CREA) and identify real estate professionals who are members of CREA (REALTOR®, REALTORS®) and/or the quality of services they provide (MLS®, Multiple Listing Service®)

Listing information last updated on April 28th, 2025 at 6:47am MDT