

Courtesy Of Jeff Jackson Of Bode

\$752,425 - 18123 92 Street Nw, Edmonton

MLS® #E4351483

\$752,425

3 Bedroom, 3.00 Bathroom, 2,751 sqft

Single Family on 0.11 Acres

Klarvatten, Edmonton, AB

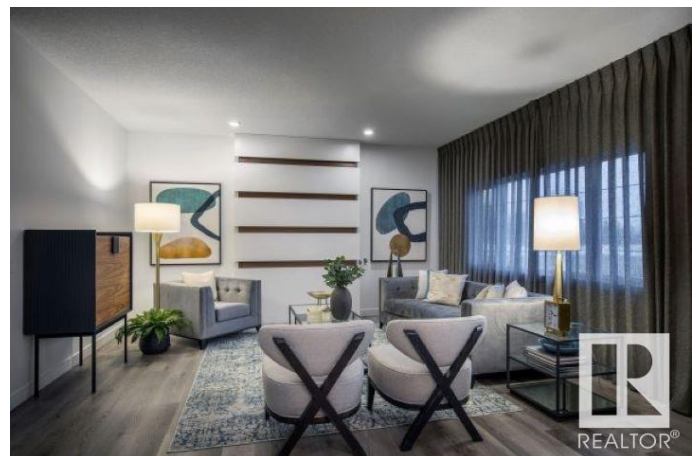
Presenting The Windsor II by Park Royal Homes. The main floor boasts beautiful LVP (Luxury Vinyl Plank) flooring throughout, creating a seamless and durable surface that is both stylish and easy to maintain. Discover a flex room, providing a versatile space that can be customized to suit your needs. The mudroom offers organization, keeping your home clutter-free. The large open kitchen, nook, and great room create a welcoming and spacious ambiance, perfect for entertaining. The walk-through pantry adds practicality, allowing for easy access to your pantry items and ensuring a well-organized kitchen. Upstairs, you'll find a bonus room that offers additional living space, providing endless possibilities for relaxation or entertainment. The master bedroom features an ensuite with a luxurious soaker tub and dual vanities, offering a private retreat to unwind and pamper yourself. Additionally, there is a laundry room and two more bedrooms, providing comfort and convenience. *Photos are representative*

Built in 2023

Essential Information

MLS® # E4351483

Price \$752,425



Bedrooms	3
Bathrooms	3.00
Full Baths	2
Half Baths	1
Square Footage	2,751
Acres	0.11
Year Built	2023
Type	Single Family
Sub-Type	Residential Detached Single Family
Style	2 Storey

Community Information

Address	18123 92 Street Nw
Area	Edmonton
Subdivision	Klarvatten
City	Edmonton
County	ALBERTA
Province	AB
Postal Code	T5Z 2K2

Amenities

Amenities	No Animal Home, No Smoking Home
Features	No Animal Home, No Smoking Home
Parking Spaces	4
Parking	Double Garage Attached
# of Garages	2
Garages	7.01 X 6.70

Interior

Interior	Carpet, Ceramic Tile, Vinyl Plank
Interior Features	Refrigerator, Stove-Electric, Washer, Dishwasher-Built-In, Dryer
Heating	Forced Air-1
# of Stories	2
Has Basement	Yes
Basement	Fully Finished, Full

Exterior

Exterior	Stone, Vinyl
Exterior Features	Corner, Level Land, Park/Reserve, Playground Nearby, Schools,

Shopping Nearby

Construction

Wood Frame

Additional Information

Date Listed

July 25th, 2023

DATA IS DEEMED RELIABLE BUT IS NOT GUARANTEED ACCURATE BY THE REALTORS® ASSOCIATION OF EDMONTON. COPYRIGHT 2024 BY THE REALTORS® ASSOCIATION OF EDMONTON. ALL RIGHTS RESERVED. Trademarks are owned or controlled by the Canadian Real Estate Association (CREA) and identify real estate professionals who are members of CREA (REALTOR®, REALTORS®) and/or the quality of services they provide (MLS®, Multiple Listing Service®)

Listing information last updated on May 20th, 2024 at 12:16pm MDT