

\$855,000 - 530 280 Portage Close, Sherwood Park

MLS® #E4314383

\$855,000

0 Bedroom, 0.00 Bathroom,
Office on 0.00 Acres

Buckingham Business Park, Sherwood Park,
AB

3,175 sq.ft office/warehouse space. Storage yard space available for lease. Grade level loading door 12'x14'. 2 stage sump. Minimum 20' clear ceiling height, 30' ceiling height at the peak.

Built in 2013

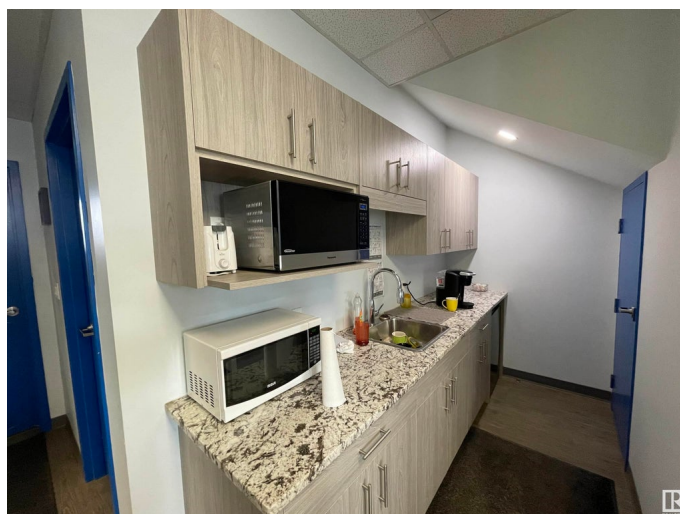
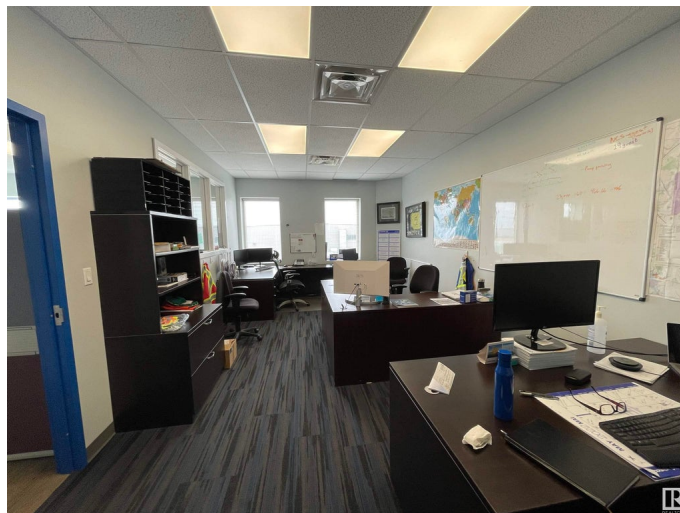
Essential Information

| | |
|------------|-----------|
| MLS® # | E4314383 |
| Price | \$855,000 |
| Bathrooms | 0.00 |
| Acres | 0.00 |
| Year Built | 2013 |
| Type | Office |
| Status | Active |

Community Information

| | |
|-------------|--------------------------|
| Address | 530 280 Portage Close |
| Area | Sherwood Park |
| Subdivision | Buckingham Business Park |
| City | Sherwood Park |
| County | ALBERTA |
| Province | AB |
| Postal Code | T8H 2R6 |

Exterior



| | |
|--------------|-------------|
| Exterior | Steel Frame |
| Construction | Steel Frame |

Additional Information

| | |
|----------------|----------------------|
| Date Listed | September 21st, 2022 |
| Days on Market | 990 |
| Zoning | Zone 25 |

DATA IS DEEMED RELIABLE BUT IS NOT GUARANTEED ACCURATE BY THE REALTORS® ASSOCIATION OF EDMONTON. COPYRIGHT 2025 BY THE REALTORS® ASSOCIATION OF EDMONTON. ALL RIGHTS RESERVED.Trademarks are owned or controlled by the Canadian Real Estate Association (CREA) and identify real estate professionals who are members of CREA (REALTOR®, REALTORS®) and/or the quality of services they provide (MLS®, Multiple Listing Service®)

Listing information last updated on June 7th, 2025 at 8:47am MDT