

\$0 - 25 Wheatland Crescent, Provost

MLS® #E4256286

\$0

0 Bedroom, 0.00 Bathroom,
Industrial on 0.00 Acres

Provost, Provost, AB

* Opportunity to Lease freestanding office/warehouse building totaling 12,000 sq.ft.± on 0.75 acres±. * Main floor consists of 10,500 sq.ft.± warehouse space and 1,500 sq.ft.± of functional air-conditioned office space * Bonus second floor office and lunchroom with kitchenette (1,500 sq.ft.±) included free of charge * Great location with easy access to Highway 13 and Hwy 899. Less than an hour from Hardisty * Drive through capability with 5 grade loading doors * Wash bay with potential for Hotsy installation * Heavy power and multiple sumps

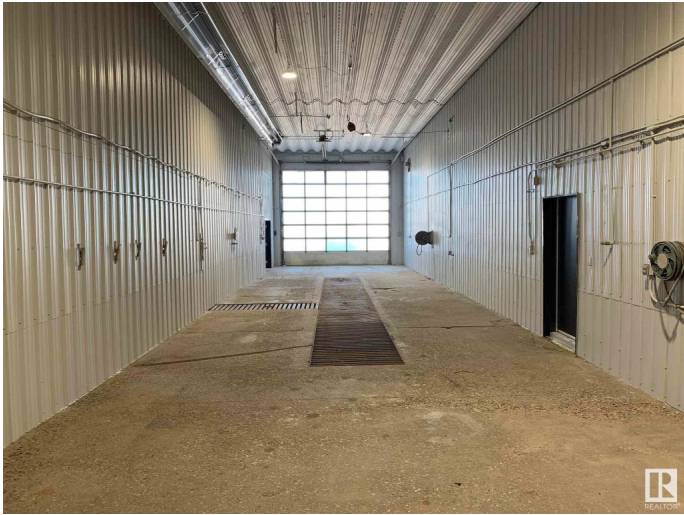
Built in 1987

Essential Information

MLS® #	E4256286
Bathrooms	0.00
Acres	0.00
Year Built	1987
Type	Industrial
Status	Active

Community Information

Address	25 Wheatland Crescent
Area	Provost
Subdivision	Provost
City	Provost



County	ALBERTA
Province	AB
Postal Code	T0B 3S0

Exterior

Exterior	Mixed
Construction	Mixed

Additional Information

Date Listed	July 27th, 2021
Days on Market	1440
Zoning	Zone 80

DATA IS DEEMED RELIABLE BUT IS NOT GUARANTEED ACCURATE BY THE REALTORS® ASSOCIATION OF EDMONTON. COPYRIGHT 2025 BY THE REALTORS® ASSOCIATION OF EDMONTON. ALL RIGHTS RESERVED. Trademarks are owned or controlled by the Canadian Real Estate Association (CREA) and identify real estate professionals who are members of CREA (REALTOR®, REALTORS®) and/or the quality of services they provide (MLS®, Multiple Listing Service®)

Listing information last updated on July 6th, 2025 at 12:47am MDT